

OVERVIEW

The Layad Circuits Mini LED Matrix Display module is a low-cost, user-friendly, and complete solution for projects that need to display text at close and medium ranges. It has an 8x64 LED matrix panel capable of displaying up to 32 characters at a time in static mode and 64

characters in scrolling mode. The panel consists of a total of 512 bright and powerful LEDs capable of rendering text visible at a distance of up to 10 meters.

The Layad Circuits Mini LED Matrix Display module is composed of eight chained individual 8x8 LED matrix modules neatly arranged on a compact ~2-cm-by-23-cm board. It has a built-in processor that handles all the driving algorithm of the chained LED matrix modules. There is no need for the user to write complex code or heavy processing to handle multiple display drivers. The module will function out-of-the-box, no soldering or assembly is required. The overhead on the host



Figure 1 Layad Circuits Mini LED Matrix Display (Perspective View)

serial interface port. The syntax of the commands is very similar to the popular and widely used AT commands. The module is capable of rendering text in scrolling or static mode. Scrolling speed, text alignment, and display brightness can be easily adjusted using the proper commands. The module has two built-in fonts and is also capable of inverting the active states of the LEDs.

The Layad Circuits Mini LED Matrix Display module has four on-board user buttons that can be utilized for other purposes. When pressed, these buttons will send

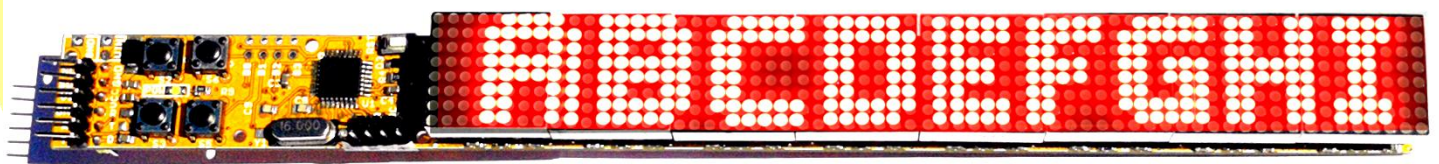


Figure 2 Layad Circuits Mini LED Matrix Display (Top View)

microcontroller (MCU) is therefore very minimal to almost none. The module is part of Layad Circuits' Kimat series of products where ease of use is a priority.

The Layad Circuits Mini LED Matrix Display module is operated by sending simple ASCII commands through its

out a corresponding key to the serial port. These buttons can be used for control-related functions that may be required by the application.

www.layadcircuits.com

Layad Circuits Electronics Engineering Supplies & Services, B314 Lopez Bldg., Session Rd. cor. Assumption Rd., Baguio City, Philippines
General inquiries: info@layadcircuits.com Sales: sales@layadcircuits.com FB: facebook.com/layadcircuits Mobile: +639164428565

An IMPORTANT NOTICE: at the end of this guide addresses availability, warranty, changes, use in safety-critical applications, intellectual property matters and other important disclaimers.

Copyright 2020 © Layad Circuits All Rights Reserved

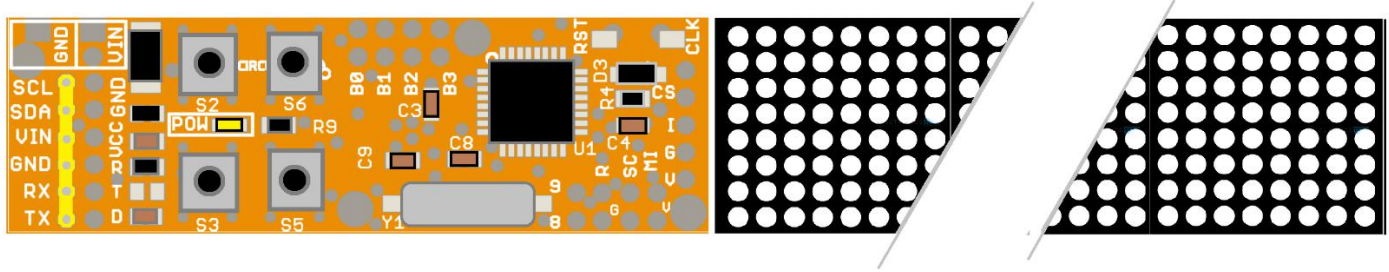


Figure 3 Top view showing controller circuit section in orange

FEATURES

- 8 x 64 LED Matrix Panel
- Built-in Processor for Handling Display-related Processes
- Bright and Powerful Display Visible at up to 10 Meters
- UART Interface for Serial Commands
 - 9600 baud, 8 databits, 1 stop bit, no parity
 - 5V Logic Level
- Simple and User-friendly Protocol similar to AT Commands
- 2 Built-in Fonts
- Static and Scrolling Modes
- Configurable Scrolling Speed, Text Alignment, and Display Brightness
- On-board User Buttons

APPLICATIONS

Below is a list of a few examples of applications for the Mini LED Matrix Display module.

- Promotional and Exhibition Stands
- Office and Store Reception Counters
- Custom Vehicle Signage
- Digital Message and Score Boards
- Digital Menu and Price Sign Boards
- Generic Signage and Character Display Applications
- Menu-based Applications
- and many others

www.layadcircuits.com

Copyright 2020 © Layad Circuits All Rights Reserved
Layad Circuits Electronics Engineering Supplies & Services, B314 Lopez Bldg., Session Rd. cor. Assumption Rd., Baguio City, Philippines

General inquiries: info@layadcircuits.com Sales: sales@layadcircuits.com FB: facebook.com/layadcircuits Mobile: +639164428565

An IMPORTANT NOTICE: at the end of this guide addresses availability, warranty, changes, use in safety-critical applications, intellectual property matters and other important disclaimers.

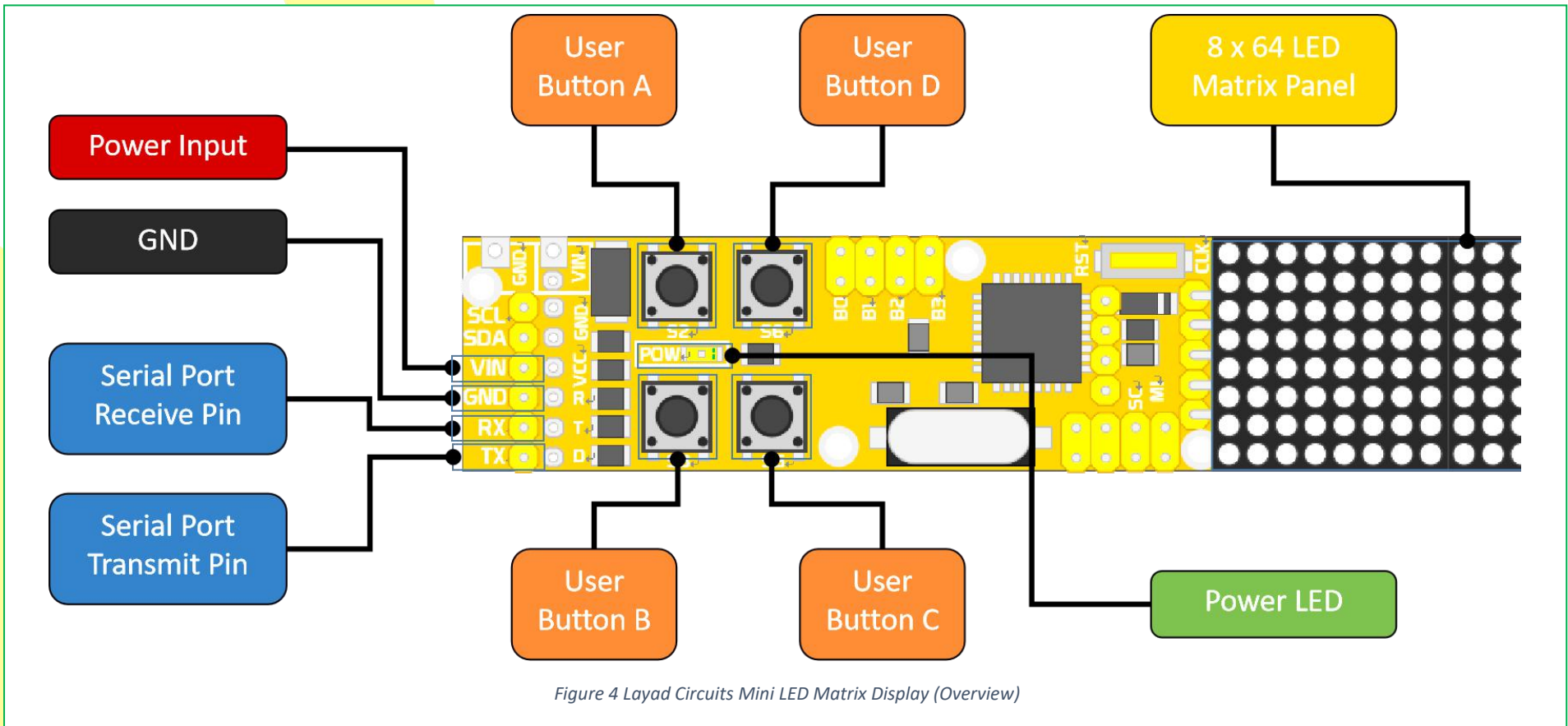


Figure 4 Layad Circuits Mini LED Matrix Display (Overview)

POWER REQUIREMENTS

The Mini LED Matrix Display module operates at 5 volts and has a typical current draw of 100-300 mA when displaying normal text. Current may peak up to 2 A when all LEDs are lit. For optimum performance, a stable 5V DC power supply with a current rating of 3A or more is recommended.

A lower current rating may also be considered when the application is guaranteed to use lower brightness settings and avoid turning on most of the LEDs. As a general approximation rule, simple text requires around a third of the LEDs to be on or around 500mA at higher brightness. Therefore, a 1A rating may be used for this case.

When used with an Arduino and powered only from a computer USB port, it is advised to keep the brightness level at a minimum to reduce current consumption. This setup is not recommended. A proper power supply should be used when deploying the project.

UART INTERFACE

The Mini LED Matrix Display module is operated by sending commands to it in ASCII format. The baud rate is 9600 baud. Serial port configuration is 8 databits, 1 stop bit, no parity. Logic level is 5V. The simple, user-friendly protocol is very similar to AT commands. See the section "SERIAL COMMANDS REFERENCE" for more information regarding the serial commands.

PIN FUNCTIONS

The Mini LED Matrix Display module has a 6-pin, single-row, 2.54mm pitched header for interfacing with an external host MCU. However, not all of the pins in this header are relevant to the user. Below are descriptions of the pins that are of importance to the user.

Pin	Function/Operation/Remarks
VIN	Power source: 5 Vdc with a recommended current rating of at least 3A.
GND	Ground pin
RXD	Serial Receive Pin. Connect to Transmit pin of the host MCU.
TXD	Serial Transmit Pin. Connect to Receive pin of the host MCU.
SDA	Reserved
SCL	Reserved

USER BUTTONS

The Mini LED Matrix Display module has on-board user buttons that will send out a corresponding character to the serial port when pressed. These buttons can be utilized for any purpose required by the user.

The user buttons, their labels, and their transmitted character are shown in the table below.

User Button	Character Sent when Pressed
S2	'A'
S3	'B'
S5	'C'
S6	'D'

PRECAUTIONS

- Use level shifters when using 3.3V microcontrollers to safely connect the device to your host controller.

SERIAL COMMANDS REFERENCE

BASIC SYNTAX

The syntax of a command is

LC+<COMMAND>=<PARAMETER><CR>

where

LC+ is a standard, fixed prefix,

COMMAND is the name of the command,

PARAMETER should be supplied depending on the command, and

CR is the ASCII character “Carriage Return”, which is used to terminate a complete command.

After receiving and **successfully** executing a complete command, the device will reply with

<COMMAND><CR><LF>OK<CR><LF>

where

COMMAND is the complete command string (echoed back) and

LF is the ASCII character “Line Feed”.

On the other hand, if the command was **rejected.**, the reply will be

<CR><LF>ERROR<CR><LF>

Note that for rejected commands, the complete command string is not echoed back by the device.

Throughout this section, only the responses “OK” or “ERROR” for each command are presented. The echoed command string and the characters <CR> and <LF> are omitted intentionally for brevity.

Name	PRINT
Description	This command prints a string on the display.
Syntax	LC+PRINT=<text><CR>
Parameter/s	<text> is the string to be printed to the device.
Expected Reply	OK if the command was accepted. ERROR if the command was rejected.
Notes	<p>The device has two built-in fonts - Font1 and Font2. These fonts use variable-width characters, which means that some characters are wider than others when rendered on the display. This also means that the maximum number of characters that can be displayed at a time will vary depending on which characters are being shown.</p> <p>The character W occupies the largest horizontal space for both fonts and thus will result to the least number of characters displayed at a time.</p> <p>The character l (lowercase 'l') occupies the smallest horizontal space for both fonts and thus will result to the most number of characters displayed at a time.</p> <p>When text scrolling is disabled (static mode), the display can render up to 10 W's and 32 l's at a time if using FONT1 (thin font)</p> <p>When text scrolling is disabled (static mode), the display can render up to 8 W's and 21 l's at a time if using FONT2 (thick font)</p> <p>If text scrolling is enabled, the maximum length allowed is 64 characters.</p>
Example	<code>Serial.print(F("LC+PRINT=ABCDEFGH\r"));</code>

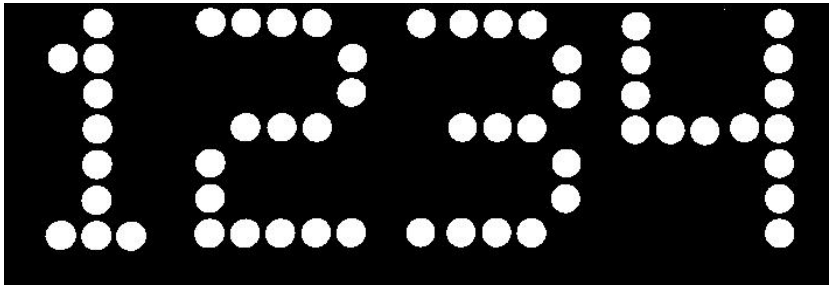
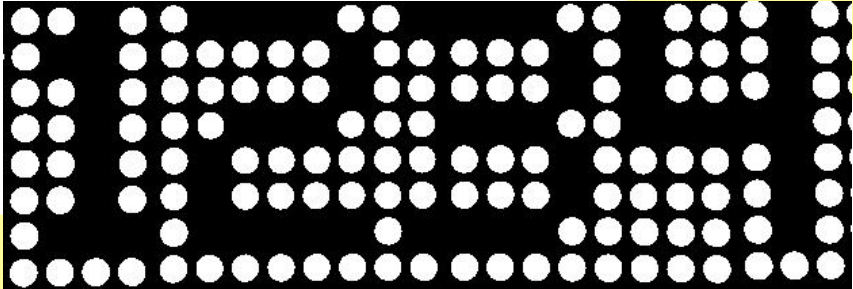
ALIGN									
Name	ALIGN								
Description	This command sets the alignment of text on the display.								
Syntax	LC+ALIGN=<loc><CR>								
Parameter/s	<loc> is the alignment value and should be one of the following values: <table border="1" data-bbox="418 407 1479 583" style="margin-left: 40px;"> <thead> <tr> <th>loc</th> <th>Description</th> </tr> </thead> <tbody> <tr> <td>LEFT</td> <td>Align text to the left.</td> </tr> <tr> <td>CENTER</td> <td>Align text to the center.</td> </tr> <tr> <td>RIGHT</td> <td>Align text to the right.</td> </tr> </tbody> </table>	loc	Description	LEFT	Align text to the left.	CENTER	Align text to the center.	RIGHT	Align text to the right.
loc	Description								
LEFT	Align text to the left.								
CENTER	Align text to the center.								
RIGHT	Align text to the right.								
Expected Reply	OK if the command was accepted. ERROR if the command was rejected.								
Notes	This command is applicable only when text scrolling is disabled. Text alignment is CENTER by default.								
Example	<code>Serial.print(F("LC+ALIGN=LEFT\r"));</code>								

Name	CLEAR
Description	This command clears the display.
Syntax	LC+CLEAR<CR>
Parameter/s	
Expected Reply	OK if the command was accepted. ERROR if the command was rejected.
Notes	
Example	<code>Serial.print(F("LC+CLEAR\r"));</code>

Name		BRIGHTNESS	
Description	This command sets the brightness of the display.		
Syntax	LC+BRIGHTNESS =<n><CR>		
Parameter/s	<n> is the brightness level, the value of which should be between 1 and 8.		
	n	Description	
	1	Lowest brightness level	
	
	8	Highest brightness level	
Expected Reply	OK if the command was accepted. ERROR if the command was rejected.		
Notes	Default brightness level is 1.		
Example	<code>Serial.print(F("LC+BRIGHTNESS =4\r"));</code>		

Name		SCROLL												
Description	This command configures text scrolling on the display.													
Syntax	LC+SCROLL=<mov><CR>													
Parameter/s	<mov> is the text scrolling configuration, the value of which should be one of the following: <table border="1" data-bbox="418 407 1479 674"> <thead> <tr> <th>mov</th> <th>Description</th> </tr> </thead> <tbody> <tr> <td>STOP</td> <td>Disables text scrolling (sets the device to static mode).</td> </tr> <tr> <td>LEFT</td> <td>Sets text scrolling direction from right-to-left.</td> </tr> <tr> <td>RIGHT</td> <td>Sets text scrolling direction to left-to-right</td> </tr> <tr> <td>UP</td> <td>Sets text scrolling direction to upward.</td> </tr> <tr> <td>DOWN</td> <td>Sets text scrolling direction to downward.</td> </tr> </tbody> </table>		mov	Description	STOP	Disables text scrolling (sets the device to static mode).	LEFT	Sets text scrolling direction from right-to-left.	RIGHT	Sets text scrolling direction to left-to-right	UP	Sets text scrolling direction to upward.	DOWN	Sets text scrolling direction to downward.
mov	Description													
STOP	Disables text scrolling (sets the device to static mode).													
LEFT	Sets text scrolling direction from right-to-left.													
RIGHT	Sets text scrolling direction to left-to-right													
UP	Sets text scrolling direction to upward.													
DOWN	Sets text scrolling direction to downward.													
Expected Reply	OK if the command was accepted. ERROR if the command was rejected.													
Notes	Text scrolling is disabled by default.													
Example	<pre>Serial.print(F("LC+SCROLL=LEFT\r"));</pre>													

Name	SCROLLSPEED																														
Description	This command configures the speed of text scrolling on the display.																														
Syntax	LC+SCROLLSPEED=<n><CR>																														
Parameter/s	<p><n> is the speed at which the text scrolls or moves across the display. Take note of the following when choosing the value for <i>n</i>.</p> <p>From n=1 to n=49, text moves or scrolls across the display with a specific interval shown in the following table:</p> <table border="1" data-bbox="415 548 1474 858"> <thead> <tr> <th>Speed (n)</th> <th>Interval in ms at which text scrolls across the display</th> </tr> </thead> <tbody> <tr> <td>1</td> <td>1000 (slowest)</td> </tr> <tr> <td>10</td> <td>822</td> </tr> <tr> <td>20</td> <td>624</td> </tr> <tr> <td>30</td> <td>427</td> </tr> <tr> <td>40</td> <td>229</td> </tr> <tr> <td>49</td> <td>51</td> </tr> </tbody> </table> <p>From n=50 to n=99, text moves or scrolls across the display with a specific interval shown in the following table:</p> <table border="1" data-bbox="415 1037 1474 1392"> <thead> <tr> <th>Speed (n)</th> <th>Interval in ms at which text scrolls across the display</th> </tr> </thead> <tbody> <tr> <td>50</td> <td>50</td> </tr> <tr> <td>60</td> <td>40</td> </tr> <tr> <td>70</td> <td>30</td> </tr> <tr> <td>75</td> <td>25</td> </tr> <tr> <td>80</td> <td>20</td> </tr> <tr> <td>90</td> <td>10</td> </tr> <tr> <td>99</td> <td>1 (fastest)</td> </tr> </tbody> </table>	Speed (n)	Interval in ms at which text scrolls across the display	1	1000 (slowest)	10	822	20	624	30	427	40	229	49	51	Speed (n)	Interval in ms at which text scrolls across the display	50	50	60	40	70	30	75	25	80	20	90	10	99	1 (fastest)
Speed (n)	Interval in ms at which text scrolls across the display																														
1	1000 (slowest)																														
10	822																														
20	624																														
30	427																														
40	229																														
49	51																														
Speed (n)	Interval in ms at which text scrolls across the display																														
50	50																														
60	40																														
70	30																														
75	25																														
80	20																														
90	10																														
99	1 (fastest)																														
Expected Reply	<p>OK if the command was accepted.</p> <p>ERROR if the command was rejected.</p>																														
Notes	The value of <i>n</i> is set to 75 by default.																														
Example	<code>Serial.print(F("LC+SCROLLSPEED=50\r"));</code>																														

Name		INVERT						
Description	This command configures inversion of LED active status on the display. Normally a LED is turned on if activated, and turned off if deactivated. This logic can be reversed if required by the application.							
Syntax	LC+INVERT=<s><CR>							
Parameter/s	<p><s> is the state of inversion. The value for s should be one of the following:</p> <table border="1"> <thead> <tr> <th>s</th> <th>Description</th> </tr> </thead> <tbody> <tr> <td>ON</td> <td>LED inversion is enabled..</td> </tr> <tr> <td>OFF</td> <td>LED inversion is disabled..</td> </tr> </tbody> </table> <p>When inversion is disabled, the string "1234" would look like as shown below. The white color will be replaced with the actual color of the LEDs on the panel.</p>  <p>When inversion is enabled, the string "1234" would look like as shown below. Again, the white color will be replaced with the actual color of the LEDs on the panel.</p> 		s	Description	ON	LED inversion is enabled..	OFF	LED inversion is disabled..
s	Description							
ON	LED inversion is enabled..							
OFF	LED inversion is disabled..							
Expected Reply	OK if the command was accepted. ERROR if the command was rejected.							
Notes	LED status inversion is disabled by default.							
Example	<code>Serial.print(F("LC+INVERT=ON\r"));</code>							

Name	FONT						
Description	This command sets the font to be used by the display.						
Syntax	LC+FONT=<f><CR>						
Parameter/s	<p><f> is the text font to be used. The value for <i>f</i> should be one of the following:</p> <table border="1"> <thead> <tr> <th>f</th> <th>Description</th> </tr> </thead> <tbody> <tr> <td>FONT1</td> <td>Thin font.</td> </tr> <tr> <td>FONT2</td> <td>Thick font.</td> </tr> </tbody> </table>	f	Description	FONT1	Thin font.	FONT2	Thick font.
f	Description						
FONT1	Thin font.						
FONT2	Thick font.						
Expected Reply	<p>OK if the command was accepted. ERROR if the command was rejected.</p>						
Notes	<p>Default text font is FONT2.</p> <p>Fonts Font1 and Font2 use variable-width characters, which means that some characters are wider than others when rendered on the display. This also means that the maximum number of characters that can be displayed at a time will vary depending on which characters are being shown on the display. For more information, see the command "PRINT".</p>						
Example	<code>Serial.print(F("LC+FONT=FONT2\r"));</code>						

ARDUINO REFERENCE EXAMPLE

This demo prints a string on the Mini LED Matrix Display. Text scrolling is enabled then disabled every 10 seconds. Likewise, the font and displayed text are changed every 10 seconds.

Setup procedure:

1. Connect pin 10 of the Arduino Uno to pin TX of the Mini LED Matrix Display.
2. Connect pin 11 of the Arduino Uno to pin RX of the Mini LED Matrix Display.
3. Connect a GND pin of the Arduino Uno to a GND pin of the Mini LED Matrix Display.
4. Compile and upload this demo to the Arduino Uno.
5. Remove then apply power to the Arduino Uno and the Mini LED Matrix at the same time.
6. The demo should now run after 5 seconds.

Wiring:

Arduino Uno	Mini LED Matrix Display
GND	GND
10	TX
11	RX

Code:

```

/*****
This software is free provided that this notice is not removed and proper attribution is accorded to Layad Circuits and its Author(s).
Layad Circuits invests resources in producing free software.
By purchasing Layad Circuits' products or utilizing its services, you support the continuing development of free software for all.
Author(s): D. Deponio for Layad Circuits Electronics Engineering
Revision: 1.0 - 2020/08/07 - initial creation
Layad Circuits Electronics Engineering Supplies and Services B314 Lopez Bldg., Session Rd. cor. Assumption Rd., Baguio City, Philippines
www.layadcircuits.com
general: info@layadcircuits.com
sales: sales@layadcircuits.com
+63-916-442-8565
*****/
#include <SoftwareSerial.h>
SoftwareSerial mySerial(10, 11); // RX, TX

void setup() {
  // put your setup code here, to run once:
  mySerial.begin(9600);
  delay(5000);
  mySerial.print(F("LC+PRINT=ABCDEFGH\r"));
}

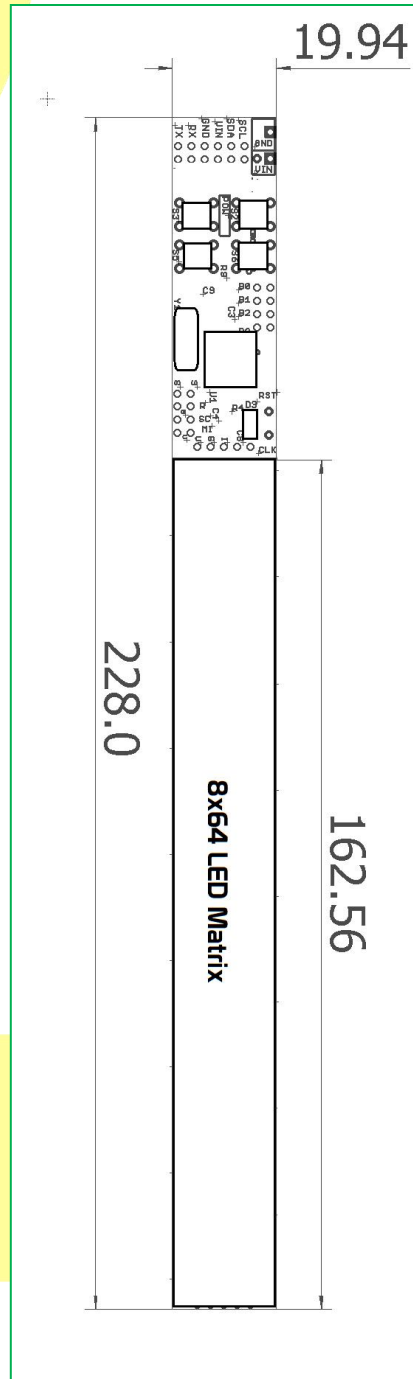
void loop() {
  // put your main code here, to run repeatedly:
  delay(10000);
  mySerial.print(F("LC+CLEAR\r")); // Clear the display.
  delay(1000); // Put a delay between commands.
  mySerial.print(F("LC+FONT=FONT1\r")); // Thin font.
  delay(1000);
  mySerial.print(F("LC+PRINT=01234567\r"));
  delay(1000);
  mySerial.print(F("LC+SCROLL=RIGHT\r")); // Enable scrolling.

  delay(10000);
  mySerial.print(F("LC+CLEAR\r")); // Clear the display.
  delay(1000);
  mySerial.print(F("LC+SCROLL=STOP\r")); // Disable scrolling.
  delay(1000);
  mySerial.print(F("LC+FONT=FONT2\r")); // Thick font.
  delay(1000);
  mySerial.print(F("LC+PRINT=ABCDEFGH\r"));
}

```

APPENDIX : PCB MECHANICAL DRAWING

Note: All dimensions are in mm



ORDERING INFORMATION

Ordering Code	Description	Revision
LC-062ES	Mini LED Matrix Display	v.1.0.0

TECHNICAL SPECIFICATIONS

Parameter	Minimum Value	Typical Value	Maximum Value
Supply Voltage		5 V	
Current Draw		~100-300 mA	2000 mA
Length	226	228 mm	230
Width	19.5	19.94 mm	20.5

IMPORTANT NOTICE

Layad Circuits Electronics Engineering Supplies & Services (Layad Circuits) reserves the right to make corrections, enhancements, improvements and other changes to its products, services and documentations, and to discontinue any product or service. Buyers or clients should obtain the latest relevant information before placing orders and should verify that such information is current and complete. Additional terms may apply to the use or sale of Layad Circuits products and services.

Reproduction of significant portions of Layad Circuits information in Layad Circuits datasheets or user guides is permissible only if reproduction is without alteration, displays the Layad Circuits logo and is accompanied by all associated warranties, conditions, limitations, and notices. Layad Circuits is not responsible or liable for such reproduced documentation. Information of third parties may be subject to additional restrictions. Resale of Layad Circuits products or services with statements different from or beyond the parameters stated by Layad Circuits for that product or service voids all express and any implied warranties for the associated Layad Circuits product or service. Layad Circuits is not responsible or liable for any such statements.

Buyers and others who are developing systems that incorporate Layad Circuits products (collectively, "Designers") understand and agree that Designers remain responsible for using their independent analysis, evaluation and judgment in designing their applications and that Designers have full and exclusive responsibility to assure the safety of Designers' applications and compliance of their applications (and of all Layad Circuits products used in or for Designers' applications) with all applicable regulations, laws and other applicable requirements. Designer represents that, with respect to their applications, Designer has all the necessary expertise to create and implement safeguards that (1) anticipate dangerous consequences of failures, (2) monitor failures and their consequences, and (3) lessen the likelihood of failures that might cause harm and take appropriate actions. Designer agrees that prior to using or distributing any applications that include Layad Circuits products, Designer will thoroughly test such applications and the functionality of such Layad Circuits products as used in such applications. Layad Circuits' provision of technical, application or other design advice, quality characterization, reliability data or other services or information, including, but not limited to, reference designs and materials relating to evaluation modules, (collectively, "Layad Circuits Resources") are intended to assist designers who are developing applications that incorporate Layad Circuits products; by downloading, accessing or using Layad Circuits Resources in any way, Designer (individually or, if Designer is acting on behalf of a company, Designer's company) agrees to use any particular Layad Circuits Resource solely for this purpose and subject to the terms of this Notice.

Layad Circuits' provision of Layad Circuits Resources does not expand or otherwise alter Layad Circuits' applicable published warranties or warranty disclaimers for Layad Circuits products, and no additional obligations or liabilities arise from Layad Circuits providing such Layad Circuits Resources.

Layad Circuits reserves the right to make corrections, enhancements, improvements and other changes to its Layad Circuits Resources. Layad

Circuits has not conducted any testing other than that specifically described in the published documentation for a particular Layad Circuits Resource.

NO OTHER LICENSE, EXPRESS OR IMPLIED, BY ESTOPPEL OR OTHERWISE TO ANY OTHER LAYAD CIRCUITS INTELLECTUAL PROPERTY RIGHT, AND NO LICENSE TO ANY TECHNOLOGY OR INTELLECTUAL PROPERTY RIGHT OF LAYAD CIRCUITS OR ANY THIRD PARTY IS GRANTED HEREIN, including but not limited to any patent right, copyright, mask work right, or other intellectual property right relating to any combination, machine, or process in which Layad Circuits products or services are used. Information regarding or referencing third-party products or services does not constitute a license to use such products or services, or a warranty or endorsement thereof. Use of Layad Circuits Resources may require a license from a third party under the patents or other intellectual property of the third party, or a license from Layad Circuits under the patents or other intellectual property of Layad Circuits. LAYAD CIRCUITS RESOURCES ARE PROVIDED "AS IS" AND WITH ALL FAULTS. LAYAD CIRCUITS DISCLAIMS ALL OTHER WARRANTIES OR REPRESENTATIONS, EXPRESS OR IMPLIED, REGARDING RESOURCES OR USE THEREOF, INCLUDING BUT NOT LIMITED TO ACCURACY OR COMPLETENESS, TITLE, ANY EPIDEMIC FAILURE WARRANTY AND ANY IMPLIED WARRANTIES OF MERCHANTABILITY, FITNESS FOR A PARTICULAR PURPOSE, AND NON-INFRINGEMENT OF ANY THIRD PARTY INTELLECTUAL PROPERTY RIGHTS. LAYAD CIRCUITS SHALL NOT BE LIABLE FOR AND SHALL NOT DEFEND OR INDEMNIFY DESIGNER AGAINST ANY CLAIM, INCLUDING BUT NOT LIMITED TO ANY INFRINGEMENT CLAIM THAT RELATES TO OR IS BASED ON ANY COMBINATION OF PRODUCTS EVEN IF DESCRIBED IN LAYAD CIRCUITS RESOURCES OR OTHERWISE. IN NO EVENT SHALL LAYAD CIRCUITS BE LIABLE FOR ANY ACTUAL, DIRECT, SPECIAL, COLLATERAL, INDIRECT, PUNITIVE, INCIDENTAL, CONSEQUENTIAL OR EXEMPLARY DAMAGES IN CONNECTION WITH OR ARISING OUT OF LAYAD CIRCUITS RESOURCES OR USE THEREOF, AND REGARDLESS OF WHETHER LAYAD CIRCUITS HAS BEEN ADVISED OF THE POSSIBILITY OF SUCH DAMAGES. Unless Layad Circuits has explicitly designated an individual product as meeting the requirements of a particular industry standard, Layad Circuits is not responsible for any failure to meet such industry standard requirements. Where Layad Circuits specifically promotes products as facilitating functional safety or as compliant with industry functional safety standards, such products are intended to help enable customers to design and create their own applications that meet applicable functional safety standards and requirements. Using products in an application does not by itself establish any safety features in the application. Designers must ensure compliance with safety-related requirements and standards applicable to their applications. Designer may NOT use any Layad Circuits products in life-critical applications. Life-critical medical equipment is medical equipment where failure of such equipment would cause serious bodily injury or death (e.g., life support, pacemakers, defibrillators, heart pumps, neurostimulators, and implantables). Designers agree that it has the necessary expertise to select the product with the appropriate qualification designation for their applications and that proper product selection is at Designers' own risk. Designers are solely responsible for compliance with all legal and regulatory requirements in connection with such selection. Designer will fully indemnify Layad Circuits and its representatives against any damages, costs, losses, and/or liabilities arising out of Designer's noncompliance with the terms and provisions of this Notice.

www.layadcircuits.com

Layad Circuits Electronics Engineering Supplies & Services, B314 Lopez Bldg., Session Rd. cor. Assumption Rd., Baguio City, Philippines
General inquiries: info@layadcircuits.com Sales: sales@layadcircuits.com FB: facebook.com/layadcircuits Mobile: +639164428565

An IMPORTANT NOTICE: at the end of this guide addresses availability, warranty, changes, use in safety-critical applications, intellectual property matters and other important disclaimers.



Thank you for supporting homegrown Filipino innovations.

www.layadcircuits.com

Copyright 2020 © Layad Circuits All Rights Reserved

Layad Circuits Electronics Engineering Supplies & Services, B314 Lopez Bldg., Session Rd. cor. Assumption Rd., Baguio City, Philippines

General inquiries: info@layadcircuits.com Sales: sales@layadcircuits.com FB: facebook.com/layadcircuits Mobile: +639164428565

An IMPORTANT NOTICE: at the end of this guide addresses availability, warranty, changes, use in safety-critical applications, intellectual property matters and other important disclaimers.